



**Location:** Berlin, Germany  
**Completion:** 2012  
**Design:** glaßer und dagenbach, landscape architects bdla  
**Photography:** Udo Dagenbach  
**Area:** 1,062.41sqm

项目地点：德国，柏林  
 完成时间：2012年  
 设计师：glaßer und dagenbach景观建筑事务所  
 摄影：乌多·达根巴赫  
 面积：13,000平方米

## MOABITER STADTGARTEN

### 莫比特城市花园

The basic idea of the concept is an urban garden, in which the residents receive a useful platform as large as possible to develop their activities, by using a clear, easily understandable outline. The park provides services as well for families as for seniors.

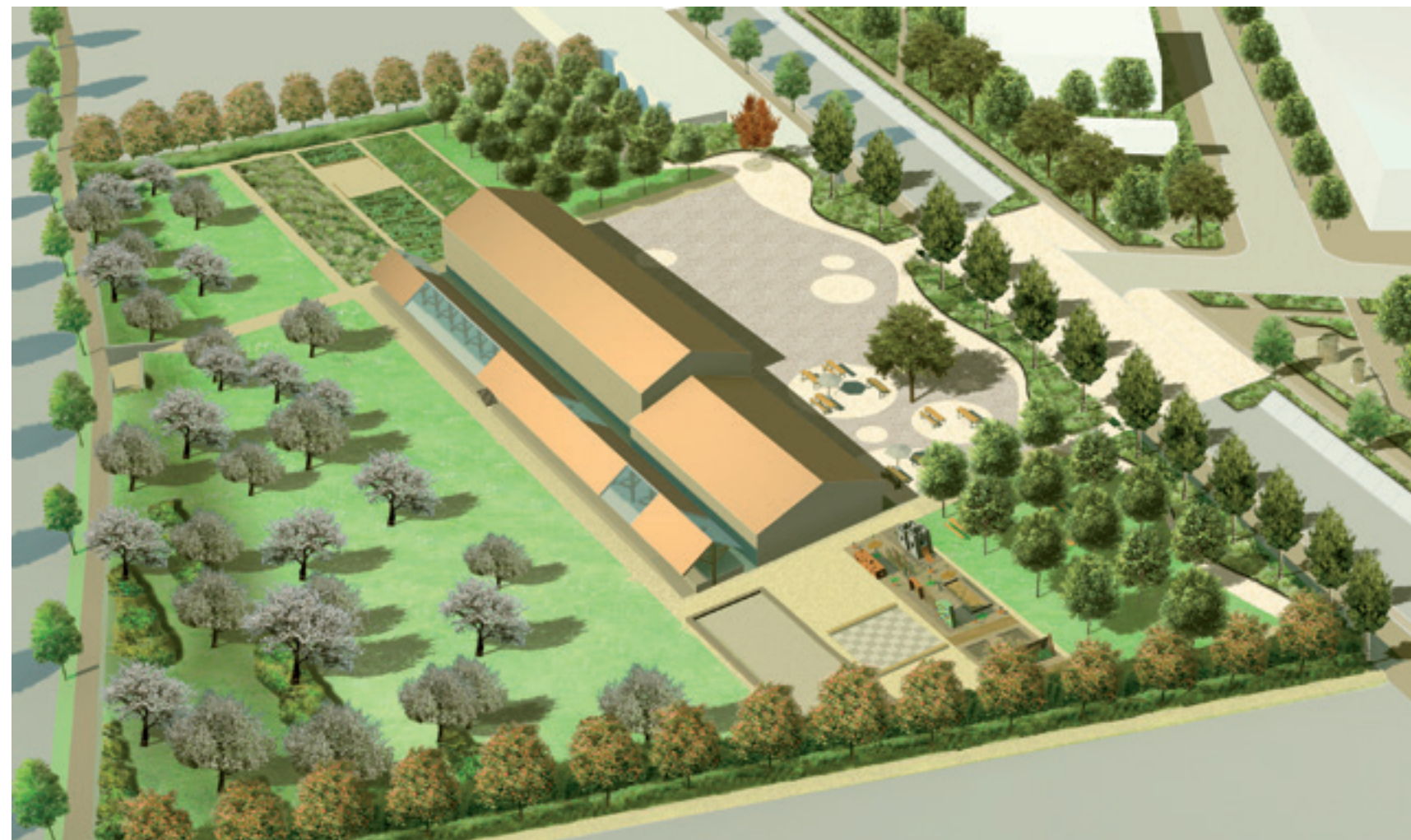
The free space in front of the former freight depot Moabit offers the possibility for various uses, for example a space for art and culture, a location for events, a playground or a meeting point in the cosy beer garden. A curved path with seatings leads to the building and to the rear areas of the park. On either side of the forecourt are created lawns under a bright canopy of 100 Japanese pagoda trees (*Sophora japonica*). Their crowns are cut flat, like a roof.

The area east of the building shall be provided to the public for an individual use. In a collaborative development process, the split area could develop, for example, into a mosaic of kitchen garden, school-based “laboratory garden” and cosy meeting place. The citizen garden receives raised planting beds and structuring rank elements.

On the west side of the building is the playground with various play and activity opportunities for children and adults. For the design of the playground children and young people between 4 and about 10 to 12 years were surveyed. Many wishes could be considered, such as a wave path for bicycles, crates, towers of wooden boxes that point to the former use of the freight depot, partner swings, nest swings and a bobby car race track.

At the north side of the park, the terrain is banked slightly rising so that a “balcony” is created. Sloping to the south a generous lawn/wildflower meadow arises as an orchard with fruit trees and shrubs, which proceeds shall be used by the residents.

The noise-protection wall to the neighbouring street is designed as a concave concrete wall with a structure like “egg-coal” – a reference to the use of the site as a freight depot.







设计的基本概念是打造一座城市花园，通过简洁清晰的设计为居民提供尽可能大的活动平台。公园的服务应当老少咸宜。

莫比特货运站原址前方的自由空间可以实现多样化的用途，例如文化艺术空间、活动场所、游乐场或休闲的啤酒花园等。一条蜿蜒的小路上布置着座椅，通往货运站和后面的公园。前院的另一侧是草坪和100棵日本槐树，它们的树冠被修剪成平屋顶的造型。

建筑东侧将为公众提供私人使用空间。在协同发展过程中，分隔的区域可以被开发成菜园、学校试验花园以及休闲聚会场所的混合体。市民花园拥有架高的种植池和结构排列元件。

建筑西侧是可供男女老少尽情游戏的游乐场。在游乐场的设计中，设计师对4至12岁之间的儿童和青少年进行了问卷调查。设计综合了他们的诸多愿望，例如自行车波道、板条箱、木盒子塔（暗指货运站）、伙伴秋千、鸟巢秋千以及警车赛道。

公园北侧的地势稍高，形成了一个“阳台”。南侧缓坡上是宽阔的草坪和野花草地，还栽种着果树和灌木，像一个果园。果园的收益将归居民所有。

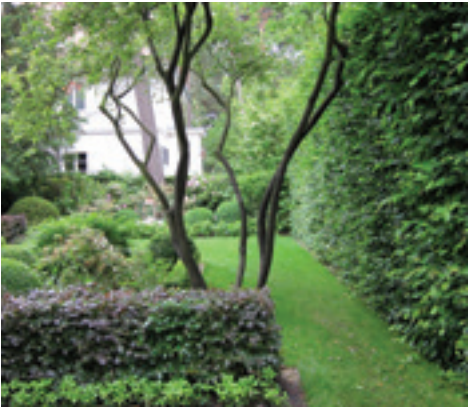
临街的减噪墙被设计成凹面混凝土墙，其纹理类似“蛋形煤块”，进一步暗示了地块作为货运站的历史。











## GARDEN OF A VILLA IN BERLIN-DAHLEM

### 柏林-达勒姆别墅花园

**Location:** Berlin, Germany

**Completion:** 2012

**Design:** glasser und dagenbach landscape architects

**Photography:** Udo Dagenbach

**Area:** 1,500sqm

项目地点：德国，柏林

完成时间：2012年

设计师：glasser und dagenbach景观事务所

摄影：乌多·达根巴齐

面积：1,500平方米

The basic idea of the design principle for the home garden was shield to the surrounding neighbouring areas and structures from the garden and the structuring of the garden itself in diverse areas, which respectively enables the use for all family members.

The crucial idea of the reorganisation of the garden was implemented using linear and selective elements from plants (*Fagus sylvatica*, *Carpinus betulus*, *Buxus sempervirens*) and stone (limestone walls, limestone cuboids, gabion walls of limestone, terrace slabs of limestone, basalt stone paving). The repetition of the stone elements and the play of colours in the plants composed from a mixture of red-leaved trees as solitaire and hedge lines, reinforces the impression of the garden by the appearance linear tree plantings of high hornbeam strains and hornbeam walls along the property border. In general, only white and blue purple flowering shrubs, perennials and bulb plants were used, thus stimulating a greater depth effect of the landscape, through the selective use of adequate flower colours. The interaction of the recurring materials and plant structures in different dimensions results in a spatial expanse. The staging of the different areas in the garden under a parent design theme was the main objective in the design idea.

这个家庭花园的基本设计理念是使其与周边的区域隔开并在花园的不同区域设计出各种功能空间，供所有家庭成员使用。

花园重新布局的关键在于精选的植物（欧洲山毛榉、欧洲鹅耳枥、锦熟黄杨）和石材（石灰岩墙、石灰岩块、石灰岩石笼墙、石灰岩平台板、玄武岩铺面）等直线形元素。石材元素的反复出现以及植物的丰富的色彩（综合了多种红叶树木）通过高大的角树和墙壁的线条突出了花园给人的印象。花园设计在整体上仅采用了白色和蓝紫色的花丛、多年生植物以及鳞基植物。精心挑选的花卉色彩组合在一起，形成了一种深邃的景观效果。同样的材料和植物结构以不同的比例反复出现，它们之间的互动形成了一种空间扩张。花园中不同区域在统一主题下的分阶段性呈现是整体设计的主要目标。









