

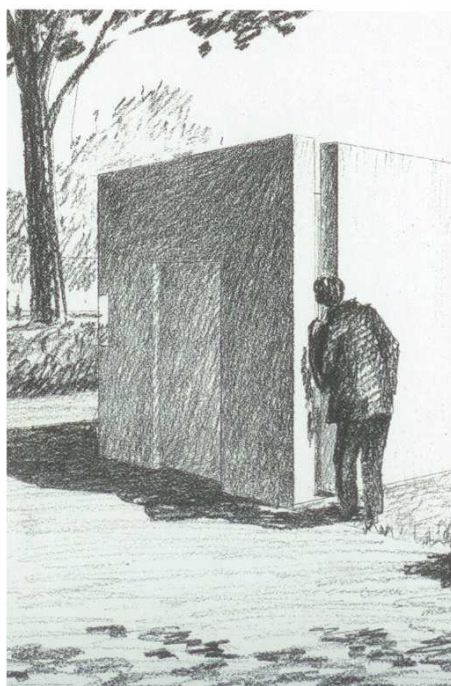


01

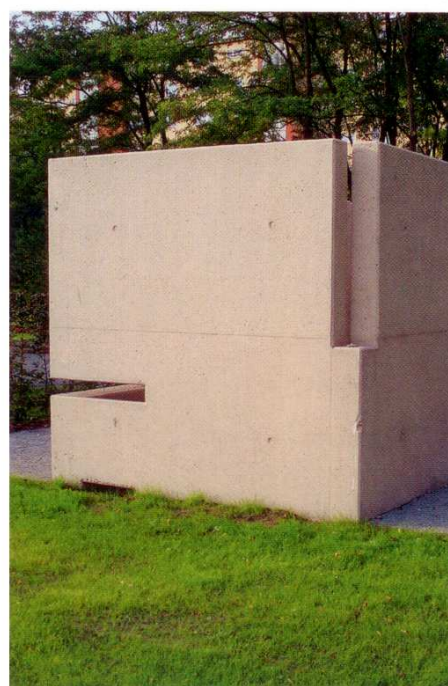
## MOABIT PRISON HISTORICAL PARK

Moabit Prison Historical Park lies opposite the new main train station in Berlin. The only surviving part of the 150-year-old prison are the high walls of the exercise yard. By means of Land Art and Minimal Art, a combination of civic park and memorial site was developed within these walls in the shape of an architectural garden. Local residents and young people were included in the design and implementation stages of play areas, which increased the general acceptance of the park. In 2007, the project received the German Landscape Architecture Award (1st place), as well as the Daylight Spaces Award (1st place).

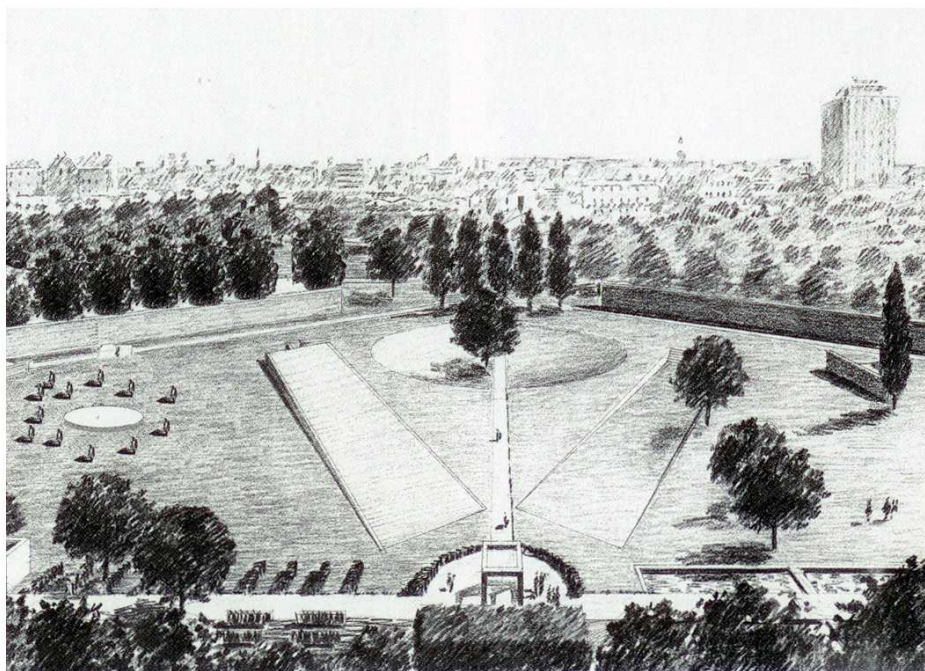
**01** Excerpt from "Moabiter Sonette" by Albrecht Haushofer on preserved prison wall **02** Reconstruction of cell in its original dimensions with sound installation (excerpt "Moabiter Sonette") **03** Reconstruction of cell in its original dimensions **04** Recreation of former surveillance square **05** Historical Park



02



03



05

CITY  
BerlinCOUNTRY  
GermanyREGION  
EuropeTYPOLOGY  
Public garden (30,000 m<sup>2</sup>)COMPLETION  
2006CLIENT  
City of BerlinOTHER CREATIVES  
Udo Dagenbach, Sivia Gläßer,  
Andreas Steiner, Alexander  
Khomyakov, Volker RöhrsLANDSCAPING  
Gläßer und Dagenbach,  
Garten und Land-  
schaftsarchitekten