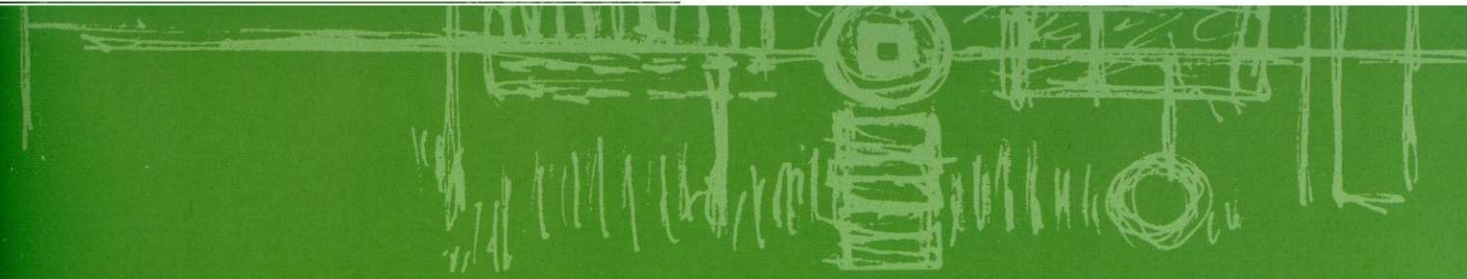




Glasser and Dagenbach

Colleagues Silvia Glasser and Udo Dagenbach have been creating innovative parks and landscapes since founding their partnership in 1988. They are dedicated to producing the highest quality landscape and garden architecture, especially focussing on public parks and gardens. Silvia Glasser earned her Diploma in Landscape Architecture from the University of Nuertingen in 1985, and is also a state approved gardener specializing in perennials. Udo Dagenbach, who studied at the Technical University of Berlin where he earned a Diploma in Landscape Architecture in 1986, is also a state approved landscape gardener, as well as a sculptor of stone. He studied stone sculpture at the University of Art in Berlin where he studied and worked under professor Makoto Fujiwara, especially as the principle project sculptor for the Bundesanstalt für Geowissenschaften in Hannover- a land art project. The small office of 3 landscape architects and 4 to 5 assistants is primarily engaged in new construction of public parks and private resort projects as well as the reconstruction of listed gardens and parks.

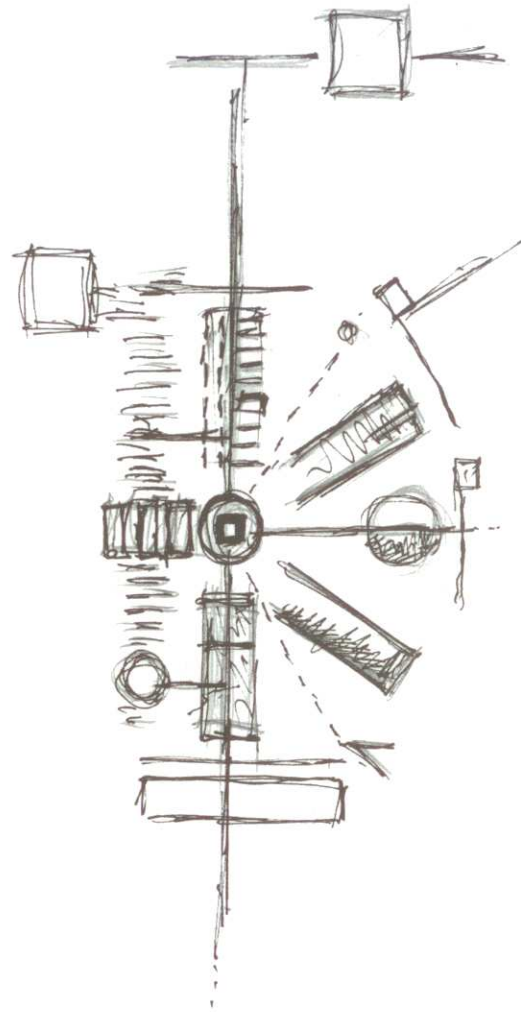


Historic Park

Glasser & Dagenbach/Udo Dagenbach, Silvia Glasser, Sabine Linke, Sabrina Schröder, Katrin Weinke, Alexander Khomiakov, Martina Levin, Andreas Steiner, Leighton Pace, Volker Röhrs, Andrea Hey

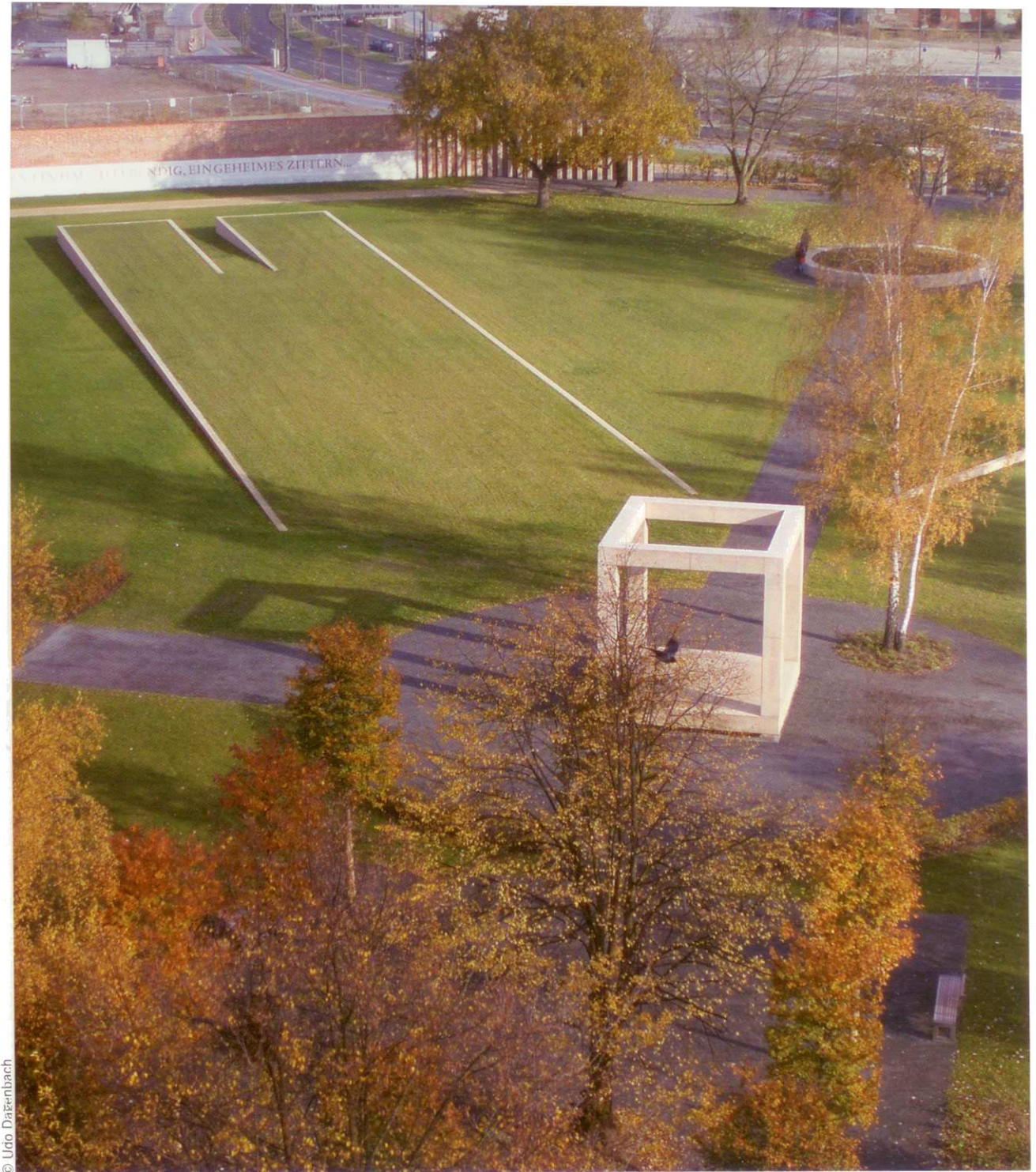
Glasser and

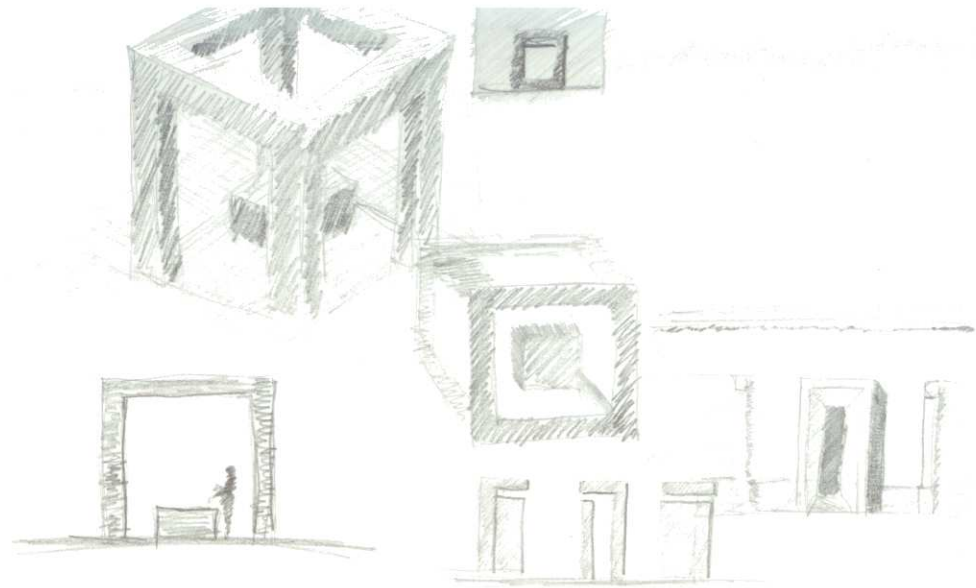
Dagenbach



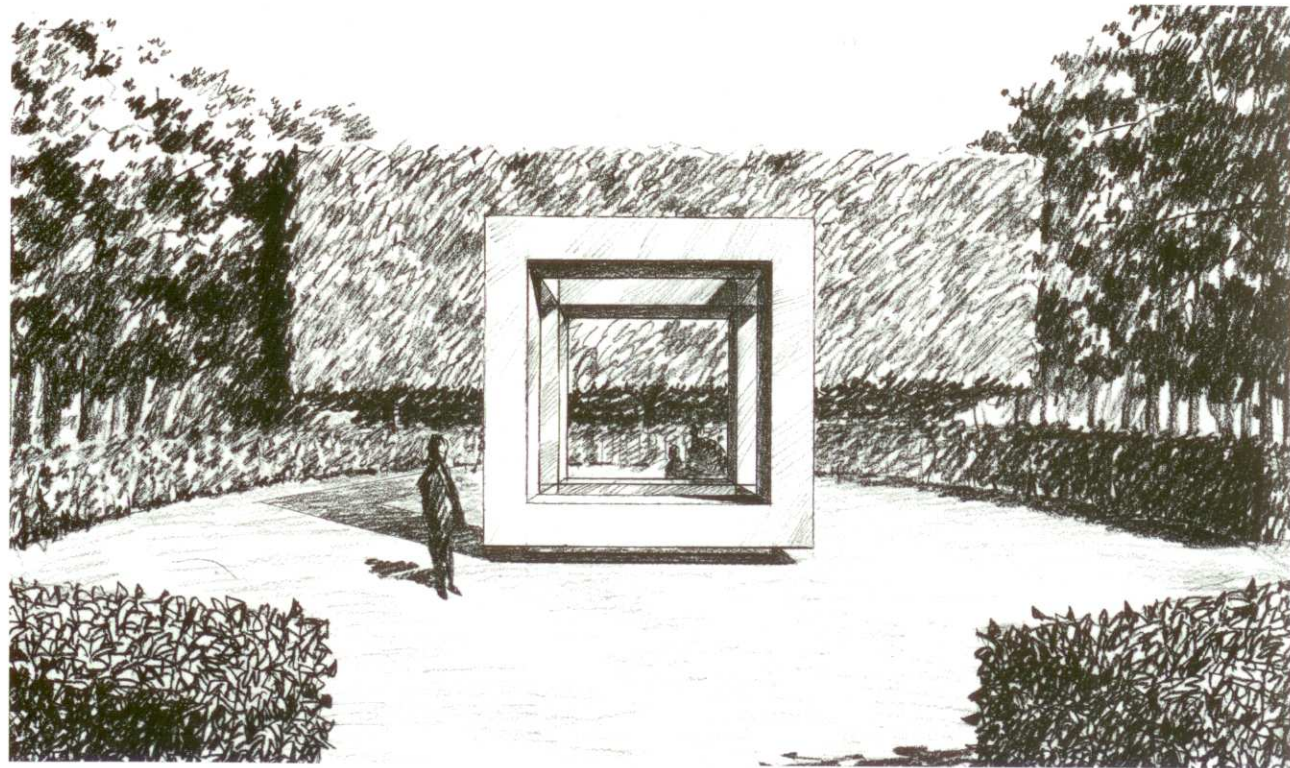
The park is built on the site of the historic Moabit penitentiary, constructed in 1849, and sits opposite of Berlin's new main station. The task of creating both a memorial and a tranquil park was accomplished through the use of minimalist sculptural design principles. The park, enclosed on three sides by the tall prison wall, contains three former guard dwellings, giving visitors a good idea of the size and shape of the prison. The original star-shaped layout of the buildings is traced by a combination of sculptural and landscape elements, such as the sunken or elevated lawn levels that trace wings B-D, and hedgerows that outline wing A and its solitary cells. A concrete sculpture is a reproduction of one of the cells wherein one may listen to a recording of Albrecht Haushofer's "Moabit Sonnets" written during his incarceration in winter 1944-45.

© Udo Dattmannbach

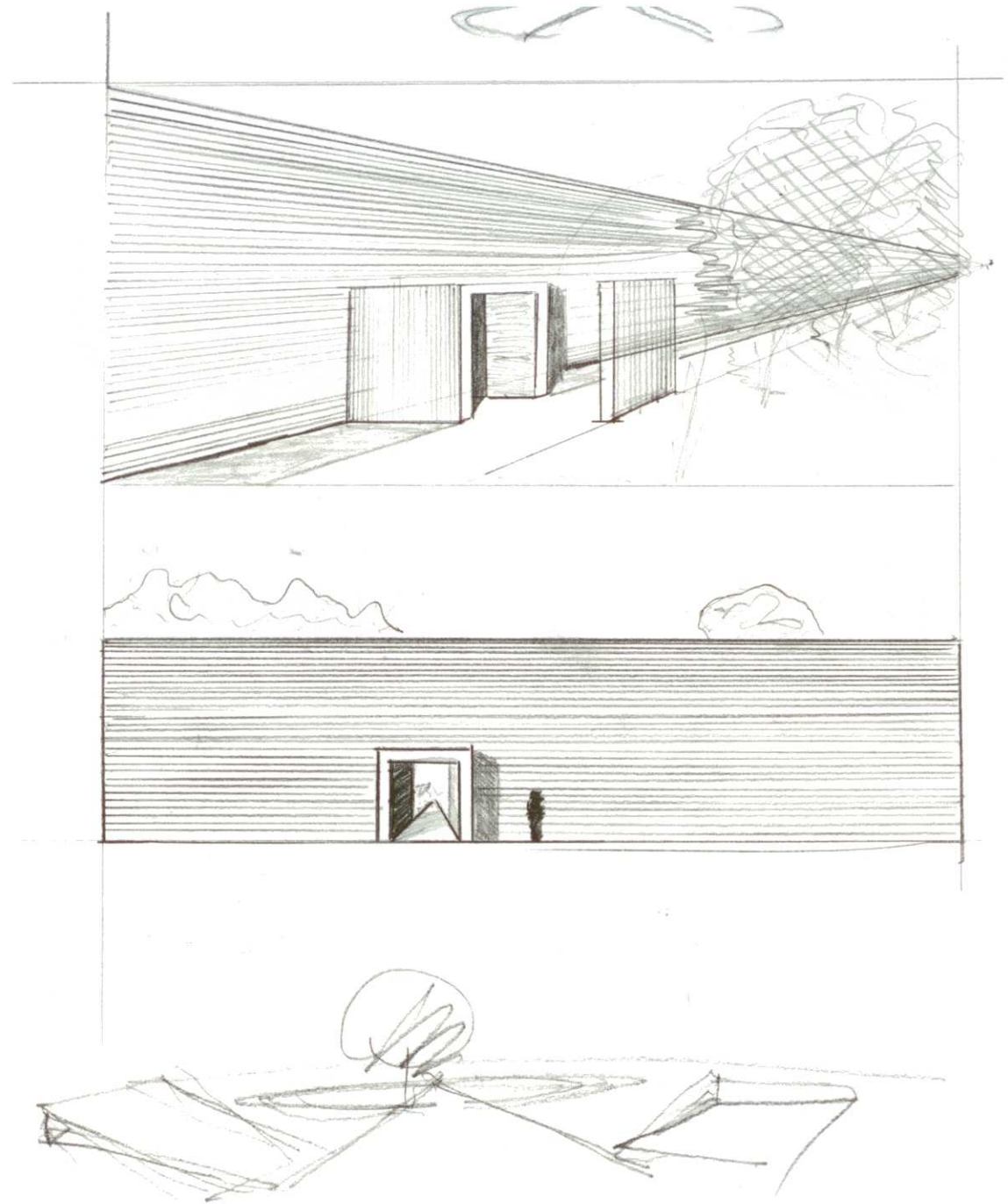




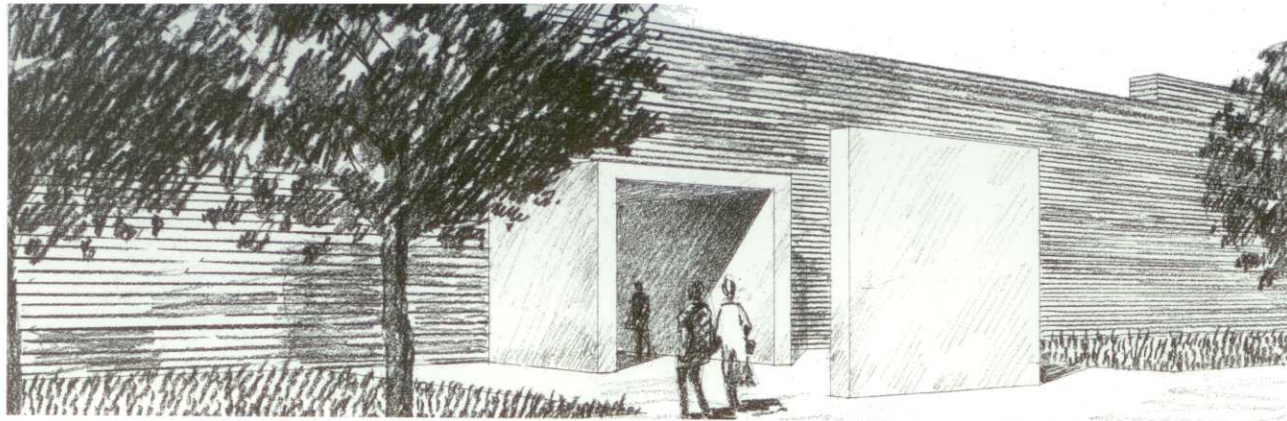
First sketch of Panoptikum



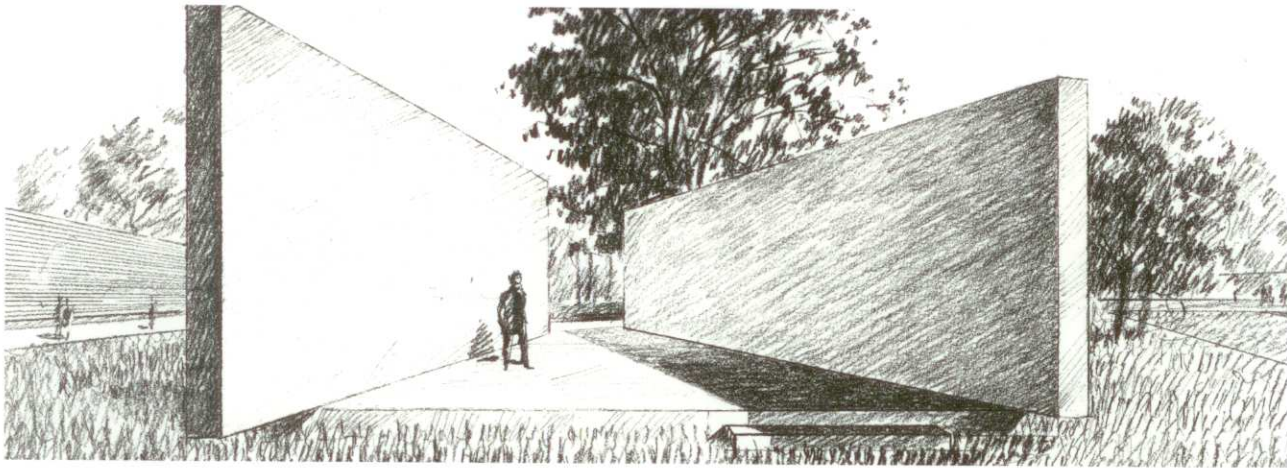
Second sketch of Panoptikum



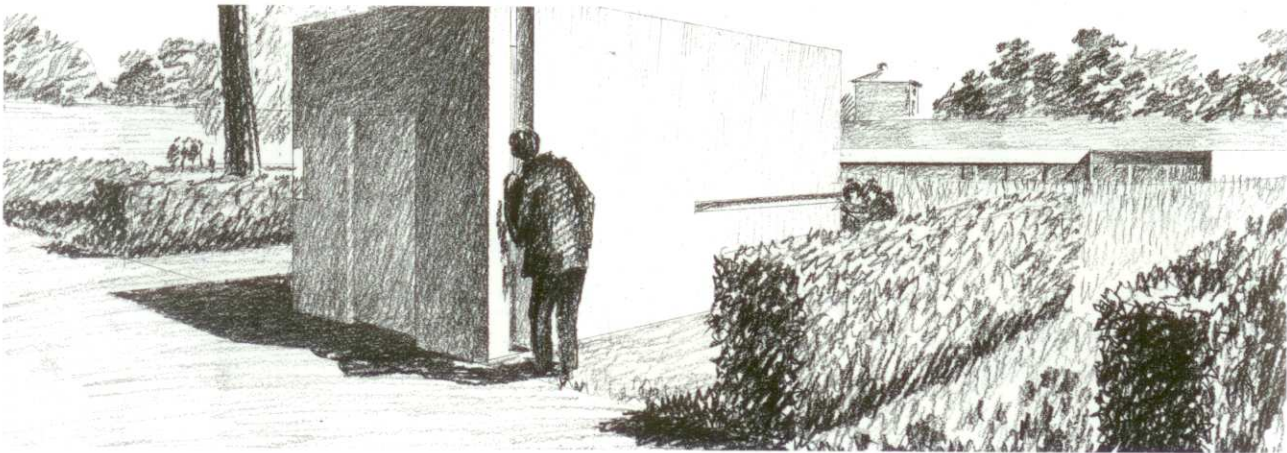
First sketch of entrance



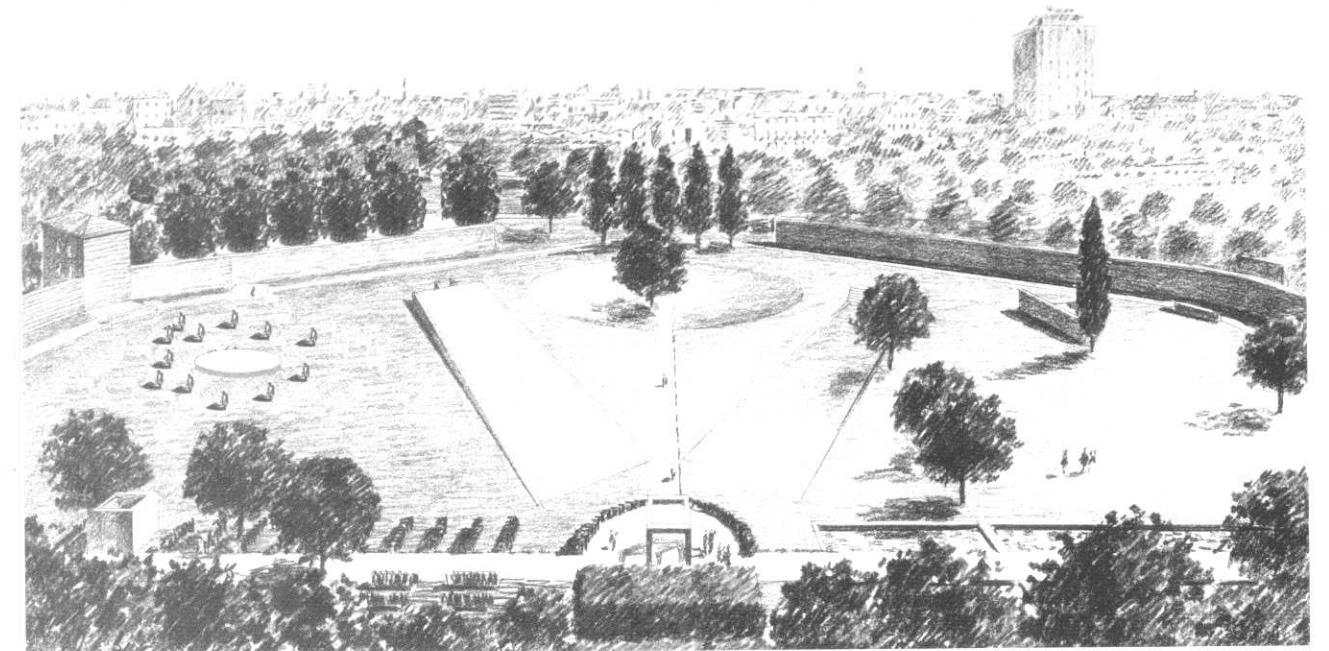
Second sketch of entrance



Sketch of sculpture for promenade yard



Sketch of sculpture box



Sketch of perspective view



General plan

1. Passage from the sonnet "In Fetters" by Albrecht Haushofer inscribed on the preserved prison wall.
2. Panoptikum, central surveillance room, symbolized by a cubic concrete sculpture.
3. Recreation of a former exercise yard where prisoners took solitary walks (original size).
4. Reconstruction of a cell in its original dimensions as a walk-in sculpture with a sound installation by Christiane Klepper.
5. Depiction of the exercise yard complex. Concrete circles illustrate the individual yards. Columnar junipers symbolize the "yardbirds".