

The Hypocrites with Caiaphas



Glaßer und Dagenbach



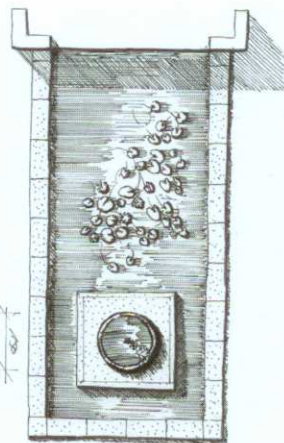
Glaßer und Dagenbach
Breitenbachplatz 17
14195 Berlin
Germany
Tel.: +49 30 618 10 80
www.glada-berlin.de

Silvia Glaße and Udo Dagenbach have been working as landscape designers on the design of parks and gardens since 1988. Silvia graduated in 1985 from the Nuertingen University and Udo graduated a year later from the Technical University of Berlin. The studio is formed by three landscape architects and five other professionals whose work is focused in the creation of open public spaces and the reconstruction of existing parks and gardens, as well as the design of natural environments in the private domain.

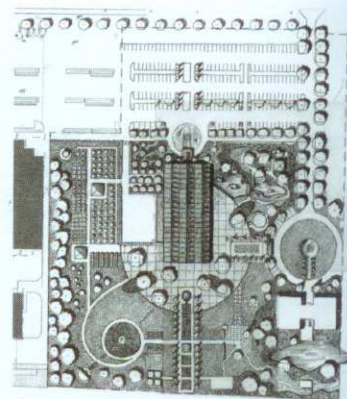
Gardencenter
Hamburg, Germany / 2007 / © Udo Dagenbach



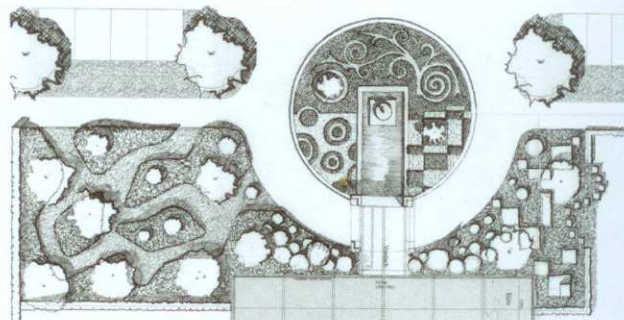
On this occasion the architects received a commission to renovate a nursery from a client they had been collaborating with for fifteen years. The project consisted in combining old and new elements to capture the different designs of gardens: from the French garden style to most minimalist of approaches.



Top view sketch



Location map



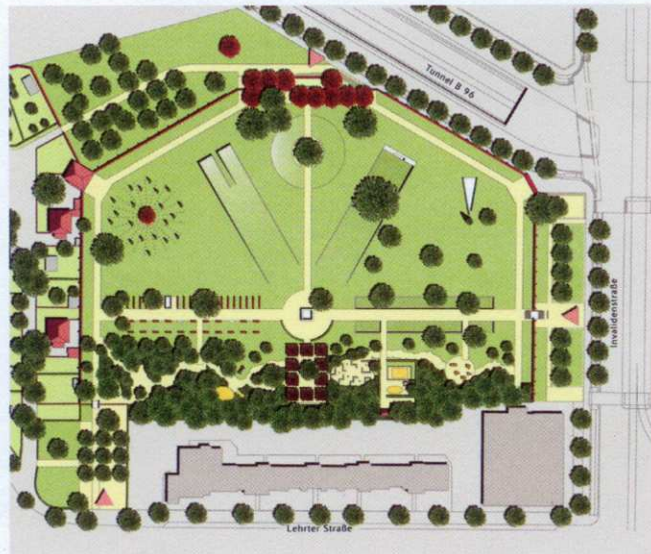
Partial plan of the entry



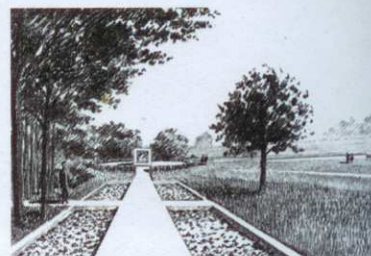
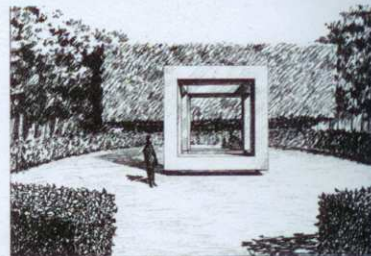
Most decisions were made on the site following the politics that the creators call *taille directe*.



The design for the remodelling of this park responds to a large degree to the thorough study of the location's history, starting with the Moabit prison that occupied it for over a century. The walls of the prison still enclose the star-shaped site.



General plan



The ubiquity of the walls encouraged to conceive open spaces with little interruptions caused by voluminous vegetation.



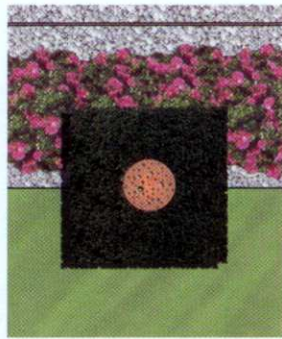
The spacious garden of the modernist villa is composed of several of the most characteristic elements of this landscape architecture studio. One example of this are the spectacular geometric sculptures half made of granite, half made of hedges meticulously trimmed.



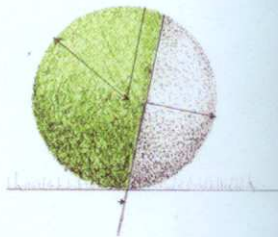
General plan



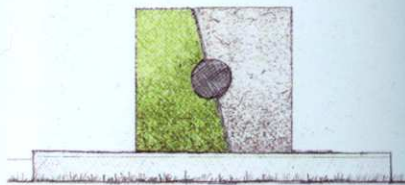
Side view of the hedge



Plan and elevation at hedge



Detail of the spherical hedge



Detail of the rectangular hedge



With Zen inspiration, this vegetable environment is conceived to take advantage of certain plant forms which are used to divide different zones.